

Review

Cerebral amyloid angiopathy in the aetiology and immunotherapy of Alzheimer disease

Roy O Weller, Stephen D Preston, Malavika Subash and Roxana O Carare

Clinical Neurosciences, University of Southampton School of Medicine, LD74, South Laboratory & Pathology Block, Southampton General Hospital, Southampton, SO16 6YD, UK

Corresponding author: Roy O Weller, row@soton.ac.uk

Published: 13 October 2009

This article is online at <http://alzres.com/content/1/2/6>

© 2009 BioMed Central Ltd

Alzheimer's Research & Therapy 2009, 1:6 (doi:10.1186/alzrt6)

Abstract

Amyloid is deposited in the walls of arteries and capillaries as cerebral amyloid angiopathy (CAA) in the brains of older individuals and of those with Alzheimer disease (AD). CAA in AD reflects an age-related failure of elimination of amyloid-beta ($A\beta$) from the brain along perivascular lymphatic drainage pathways. In the absence of conventional lymphatic vessel in the brain, interstitial fluid and solutes drain from the brain to cervical lymph nodes along narrow basement membranes in the walls of capillaries and arteries, a pathway that is largely separate from the cerebrospinal fluid. In this review we focus on the pathology and pathogenesis of CAA, its role in the aetiology of AD and its impact on immunotherapy for AD. The motive force for lymphatic drainage of the brain appears to be generated by arterial pulsations. Failure of elimination of $A\beta$ along perivascular pathways coincides with a reduction in enzymic degradation of $A\beta$, reduced absorption of $A\beta$ into the blood and age-related stiffening of artery walls that appears to reduce the motive force for lymphatic drainage. Reduced clearances of $A\beta$ and CAA are associated with the accumulation of insoluble and soluble $A\beta$ s in the brain in AD and the probable loss of homeostasis of the neuronal environment due to retention of soluble metabolites within the brain. Tau metabolism may also be affected. Immunotherapy has been successful in removing insoluble plaques of $A\beta$ from the brain in AD but with little effect on cognitive decline. One major problem is the increase in CAA in immunised patients that probably prevents the complete removal of $A\beta$ from the brain. Increased knowledge of the physiology and structural and genetic aspects of the lymphatic drainage of $A\beta$ from the brain will stimulate the development of therapeutic strategies for the prevention and treatment of AD.

Introduction

Deposition of amyloid-beta ($A\beta$) in the walls of cerebral arteries and capillaries as cerebral amyloid angiopathy (CAA) has a prevalence of 90% to 96% in patients with Alzheimer disease (AD) [1] and is present in 30% of non-demented individuals over the age of 60 years [2]. CAA reflects an age-related failure of elimination of $A\beta$ from the brain along perivascular lymphatic drainage pathways by which interstitial

fluid (ISF) and solutes drain from the brain [3-5]. This failure may be a key factor in the aetiology of AD.

Most organs have networks of lymphatic vessels that transport fluid, protein macromolecules, cells and particulate matter from tissue to lymph nodes. Lymphatic drainage along these vessels relies upon highly competent valves, an extrinsic pump action generated by external forces from surrounding tissues and an intrinsic pump generated by coordinated contractions of lymphatic muscle cells [6]. There are no conventional lymphatics in the brain. Instead, ISF and solutes drain out of the brain along narrow basement membranes in the walls of capillaries and arteries to lymph nodes in the neck [3,7], probably driven by an intrinsic pump powered by vascular pulsations [8]. The perivascular lymphatic drainage pathway for ISF and solutes from the brain is largely separate from the cerebrospinal fluid (CSF) [7,9]. With increasing age, the brain, with its almost unique lymphatic drainage system, develops problems with lymphatic drainage of $A\beta$ and other amyloids and these problems are rarely seen in other organs. As a result, soluble and insoluble $A\beta$ s accumulate in vessel walls and in brain parenchyma.

CAA in AD is a protein-elimination-failure arteriopathy (PEFA) [5,7] common to other forms of CAA in which a variety of amyloidogenic peptides accumulate in the walls of cerebral arteries. Non- $A\beta$ forms of CAA tend to be hereditary in origin and are associated with intracerebral haemorrhage or dementia [10]. Mutated cystatin C is deposited in the walls of cerebral arteries as CAA and occasionally in arteries elsewhere in the body in the autosomal dominant hereditary cerebral haemorrhage with amyloidosis of Icelandic type (HCHWA-1) [10,11]. Patients suffer intracerebral haemorrhage at an early age, and those who survive may develop dementia [11]. Variant transthyretin accumulates in vessels in

$A\beta$ = amyloid-beta; AD = Alzheimer disease; ApoE = apolipoprotein E; CAA = cerebral amyloid angiopathy; CSF = cerebrospinal fluid; ISF = interstitial fluid; LRP-1 = lipoprotein receptor-related protein-1; NFT = neurofibrillary tangle; PrP = prion protein.

the endoneurium of peripheral nerves in familial amyloid peripheral neuropathy [12], and in some families, there is deposition of mutant transthyretin in the walls of leptomeningeal arteries and in brain parenchyma [10]. In the Finnish type of familial amyloidosis, systemic and cerebral amyloidosis is related to the protein gelsolin [10]. Two of the most carefully documented forms of hereditary CAA are those related to the British and Danish forms of familial dementia [10]. Mutations in the *BRI2* gene are associated with deposition of ABri and ADan amyloids in brain and spinal cord and as CAA [10]. *BRI2* mRNA and *BRI2* protein are widely expressed by neurons and glia but are not expressed by cerebrovascular smooth muscle cells [13], suggesting that the amyloid in the vessel walls is derived from the brain rather than produced locally by smooth muscle cells in the artery walls. Prion proteins (PrPs) are deposited mainly in brain parenchyma in human and animal prion disorders such as Creutzfeldt-Jacob disease, scrapie and bovine spongiform encephalopathy [14]. However, PrP CAA has been reported in familial and sporadic human disease [10] and in certain types of scrapie in which there is a truncated form of PrP [15], suggesting that PrP may normally drain from the brain along perivascular pathways.

In this review, we concentrate on A β -CAA as it is the commonest type of CAA and has a very significant association with intracerebral haemorrhage and dementia in the older population [16]. In particular, we focus on the pathology, pathogenesis and complications of CAA, its relationship to the aetiology of AD and how it affects the clinical outcome of immunotherapy for AD. Many of the general principles that have emerged from the study of A β -CAA can be applied to the other, less common, types of CAA [10]. As A β acts as a natural tracer for the drainage of solutes from the human brain, CAA has been a useful model for establishing lymphatic drainage pathways of the human brain and their significance for neuroimmunology [7,17].

Pathology of cerebral amyloid angiopathy

The first detailed descriptions of CAA are attributed to Scholz [18], who described the deposition of proteinaceous material within cerebral artery and capillary walls and as excrescences or Drusen on the outer aspects of vessels in the brain (*drusige Entartung*). In the 1980s, it was from leptomeningeal arteries with CAA that Glenner and colleagues [19] first isolated and characterised A β .

The distribution of CAA in the different regions of the brain corresponds to the distribution of plaques of A β [20-22]. In AD, plaques and CAA both appear to follow a sequence involving the cerebral isocortex (neocortex) at the earliest stages, then the allocortex of the hippocampus and related structures, followed by involvement of the basal ganglia and thalamus [20-22]. The structures of the walls of arteries in the neocortex and basal ganglia differ [23] and this may partly account for the less frequent deposition of A β as plaques and CAA in the basal ganglia [20,22,23].

The shorter and more soluble A β 40 is most abundant in CAA, whereas the longer and less soluble A β 42 predominates in A β plaques within brain parenchyma [23]. Apolipoprotein E (ApoE) co-localises with A β , both in plaques in the brain and with A β in the walls of capillaries and arteries in CAA [22,23]. Together with age, *APOE* ϵ 4 genotype is a major risk factor for both CAA and AD [1].

Cerebral amyloid angiopathy in leptomeningeal arteries

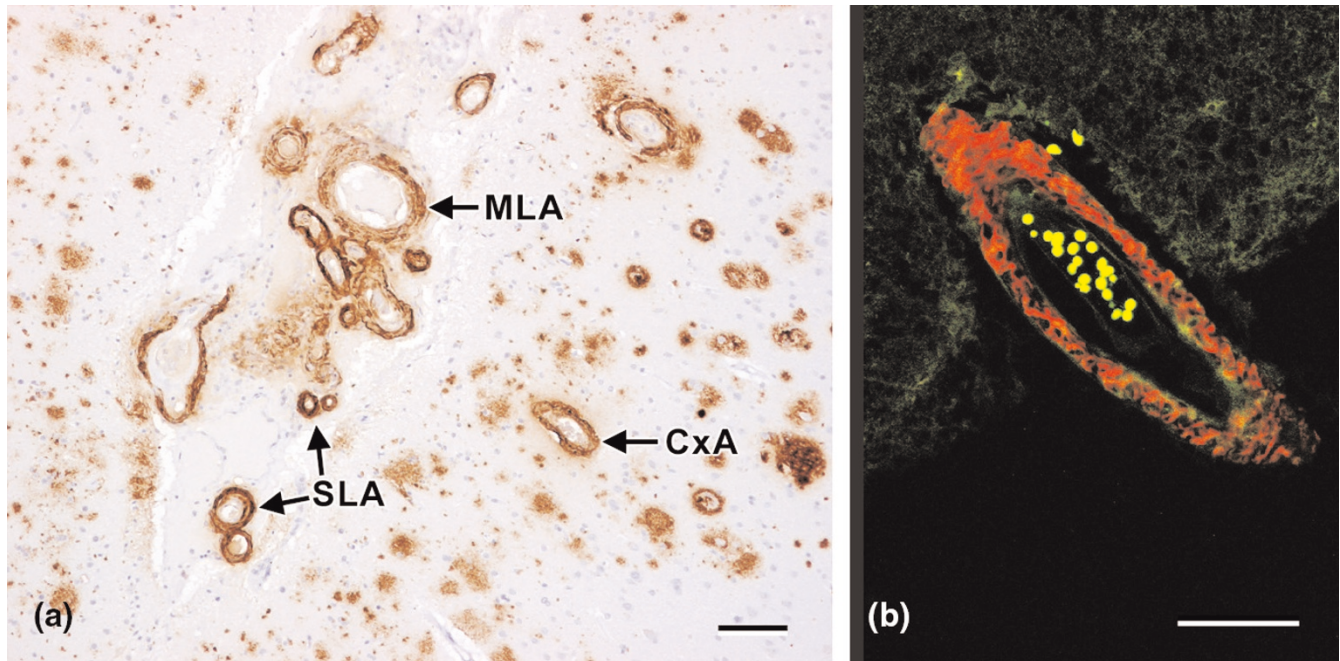
Leptomeningeal arteries on the surface of the cerebral hemispheres are most commonly affected by CAA, arteries in the cerebral cortex are less affected, and capillaries are even less frequently involved by CAA. Medium-sized leptomeningeal arteries often have a patchy deposition of A β in the media or in the adventitia on the outer aspects of the artery wall (Figure 1a) [23]. Small arteries may show dense accumulation of A β in the tunica media (Figure 1a), or as seen in an artery entering the cerebral cortex in Figure 1b, there may be a reticular pattern of A β deposition that reflects the accumulation of A β in the basement membranes of the smooth muscle cells in the tunica media [4,5,24].

A β is detectable by thioflavin staining or by immunohistochemistry mainly in the walls of leptomeningeal arteries with a diameter of less than 60 μ m [4], but this reveals only part of the picture. Biochemical investigations have detected A β in intracranial vessels as large as the basilar and middle cerebral arteries in individuals as young as 20 years of age (the youngest tested) and increasing sharply in those from 50 to 70 years of age [25]. A β was undetectable in the walls of extracranial blood vessels [25]. In transgenic mouse models of A β -CAA, there is heavy deposition of A β in the walls of leptomeningeal arteries, but involvement may start with the larger arteries at the base of the brain [26]. Veins do not appear to be involved in CAA, although deposits of A β are found attached to the walls of veins when CAA of leptomeningeal arteries is severe; this may be due to flakes of amyloid detaching from artery walls in the subarachnoid space and attaching to veins [23].

Cerebral amyloid angiopathy in cortical arteries

A β may be deposited in the whole or part of the circumference of the wall of cortical arteries (Figure 2a). When arteries are viewed in a longitudinal plane, however, deposition of amyloid is often discontinuous along the length of the vessel (Figure 2b). Transverse bands (Figure 2c) reflect the deposition of amyloid in basement membranes surrounding smooth muscle cells in the tunica media [4]. A similar patchy distribution is seen in the walls of leptomeningeal arteries [4,27]. The discontinuous nature of the amyloid deposits in CAA means that estimating the true incidence and severity of CAA is probably most accurately performed on isolated cerebral vessels rather than on sections of brain [27].

A β is frequently deposited in the glia limitans that surrounds arteries in the cortex. However, it is unlikely that A β drains

Figure 1

Cerebral amyloid angiopathy in Alzheimer disease. **(a)** Small leptomeningeal arteries (SLAs) on the surface of the cerebral cortex show dense deposits of amyloid-beta ($A\beta$) in their walls, whereas the medium-sized arteries (MLAs) show a more dispersed pattern of deposition of $A\beta$. A cortical artery with cerebral amyloid angiopathy (CxA) is surrounded by plaques of $A\beta$ in the brain parenchyma (pan- $A\beta$ immunohistochemistry). **(b)** Branch of a leptomeningeal artery entering the cerebral cortex. Amyloid (red) is in the basement membranes (as outlined by collagen IV staining [5]) surrounding smooth muscle cells [4] (dark spaces) in the tunica media (confocal microscopy of Congo red stained preparation). Scale bars = 100 μm (a) and 50 μm (b).

directly from the glia limitans into the artery wall [28] as the adjacent artery wall may lack $A\beta$ (Figure 2d), and in the less severely involved vessels, there is discontinuity across the artefactual space [28] that separates $A\beta$ in the artery wall from deposits in the glia limitans (Figure 2d-f). ApoE is also deposited in the glia limitans and co-localises with the $A\beta$ [22]. The ligand in the glia limitans to which the $A\beta$ binds is not known and it may be that $A\beta$ is taken up by astrocytes [22]. Dystrophic neurites are also seen in the perivascular glia limitans, although again the reason is not clear [1]. At the surface of the cerebral cortex, deposition of $A\beta$ may be seen in the glia limitans remote from artery walls [4] (Figure 2f), which suggests that the deposits are due to an inherent property of the glia limitans rather than related to perivascular drainage of $A\beta$.

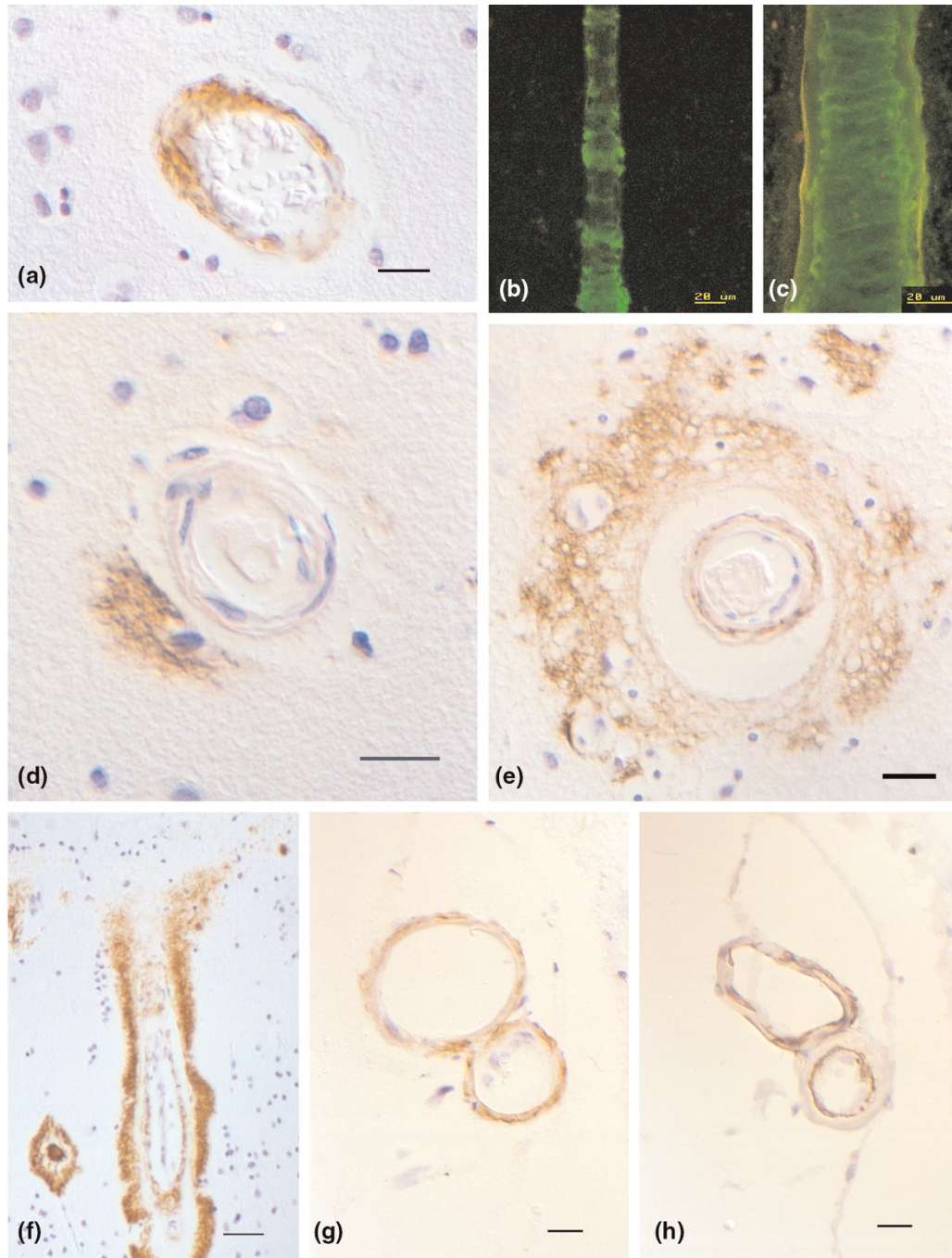
Deposition of $A\beta$ in basement membranes in artery walls appears to impair the perivascular drainage of ISF and solutes from the brain [3,5], but it has other effects. Smooth muscle cells are lost from artery walls in CAA and replaced by amyloid (Figure 2g,h), and the affected vessels may show severe degenerative changes that are associated with cerebral haemorrhage [29].

Capillary amyloid angiopathy

Deposits of $A\beta$ in capillary walls are much less common than $A\beta$ deposits in the walls of cortical and leptomeningeal arteries [30]. Capillary CAA is seen mostly in areas that are devoid of $A\beta$ plaques [31,32], and the $A\beta$ in the capillary walls is mainly $A\beta_{42}$ [30].

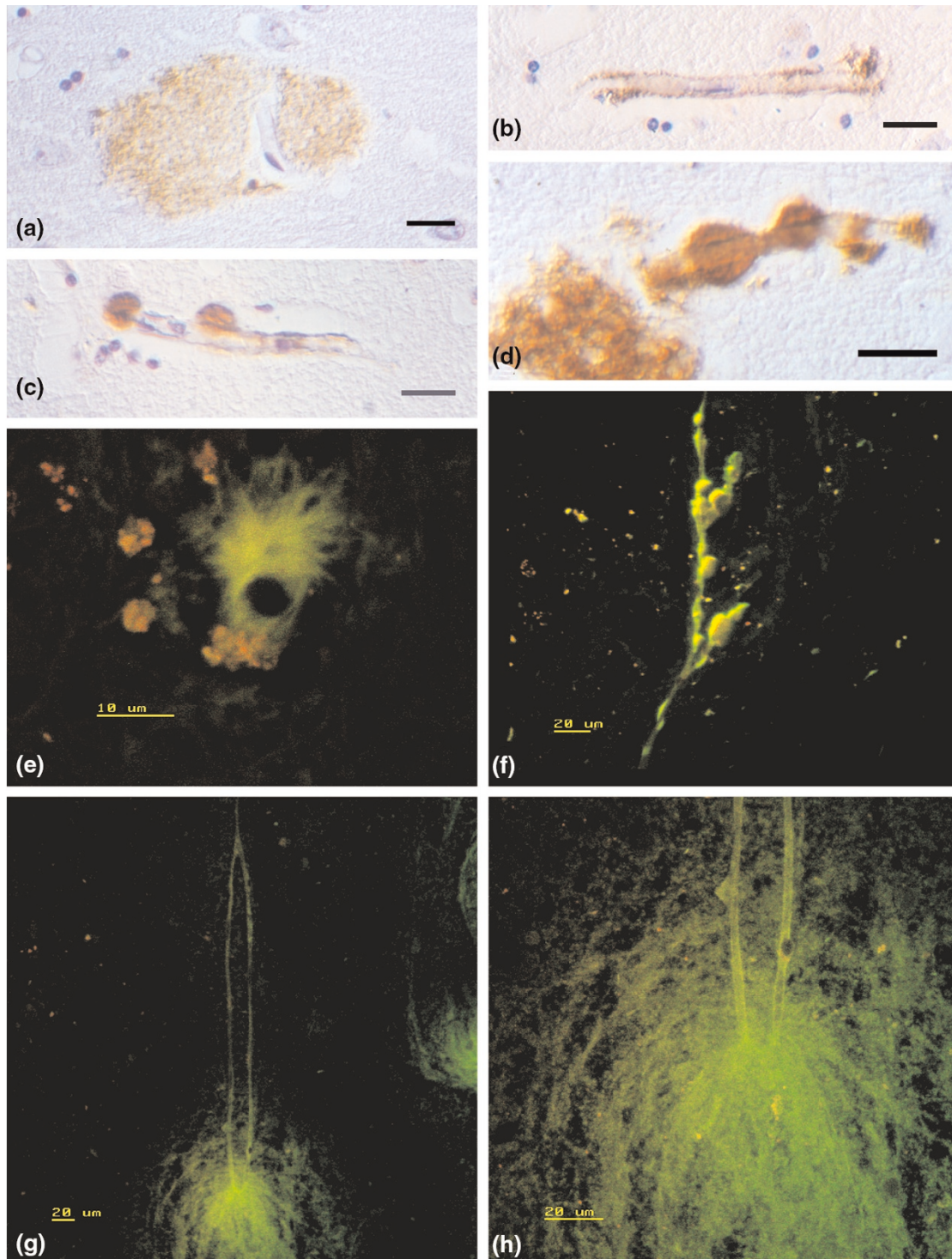
Capillaries with no $A\beta$ in their walls may be closely associated with diffuse plaques of $A\beta$ (Figure 3a). In CAA, insoluble $A\beta$ is deposited in the basement membranes of capillary endothelia (Figure 3b-d) and as excrescences or Drusen (Figure 3c-h) that are smooth and globular (Figure 3c,d,f), irregular (Figure 3e) or filamentous (Figure 3g,h). Drusen are continuous with $A\beta$ in the capillary basement membrane. Both types of pericapillary deposit of $A\beta$ can be demonstrated in paraffin sections (Figure 3c-e), in smear preparations of brain [28] (Figure 3f-h) or on vessels isolated by digesting away the surrounding brain tissue [4]. The consolidated globular Drusen (Figure 3c,d,f) may be older than the filamentous deposits of $A\beta$ where the strands of amyloid are in the extracellular spaces of the brain parenchyma through which solutes diffuse to reach the drainage pathways in the capillary walls [3,33].

Figure 2



Cerebral amyloid angiopathy: amyloid-beta ($A\beta$) in cortical and leptomeningeal artery walls. **(a)** Cortical artery with deposition of $A\beta$ in its wall but with no $A\beta$ in the glia limitans (pan- $A\beta$ immunohistochemistry). Smear preparations of cortical arteries showing **(b)** a patchy transverse banding pattern of amyloid deposition with no amyloid deposits attached to the outer aspect of the artery and **(c)** transverse banding of amyloid associated with the basement membranes of smooth muscle cells [4,5] (thioflavin S stain: confocal images). Pan- $A\beta$ immunohistochemistry of cortical arteries showing **(d)** $A\beta$ in the glia limitans but with no $A\beta$ in the vessel wall, **(e)** deposits of $A\beta$ in the artery wall and in the glia limitans but no continuity between the two $A\beta$ deposits and **(f)** $A\beta$ in an artery wall with a heavy deposit of $A\beta$ in the glia limitans both surrounding the vessel and on the surface of the brain (top). There is no continuity between the staining in the vessel wall and the glia limitans. A cored amyloid plaque in the brain parenchyma is seen to the left of the artery. Leptomeningeal arteries showing **(g)** deposition of $A\beta$ in the vessel walls (pan- $A\beta$ immunohistochemistry) and **(h)** loss of alpha-smooth muscle actin staining in the artery walls in relation to the deposition of $A\beta$; arteries in (h) are the same as those in (g). (Immunohistochemistry for alpha-smooth muscle actin.) Scale bars = 20 μm (a-e,g,h) and 50 μm (f). Reprinted with permission from John Wiley & Sons, Inc. [28].

Figure 3



Capillary amyloid angiopathy. Pan-amyloid-beta (pan-A β) immunohistochemistry. **(a)** A diffuse plaque of A β in cerebral cortex with a capillary, devoid of A β , running through it. Cortical capillaries are surrounded by **(b)** a thin layer of A β corresponding to the perivascular basement membrane **(c)** with attached globular deposits of A β (Drusen) continuous with A β in the capillary wall. **(d)** Globular A β Drusen partly surround the capillary wall. Confocal images were stained with thioflavin S. **(e)** Histological section of a cortical capillary with a spiky Druse of amyloid continuous with amyloid in the capillary wall. **(f)** Smear preparations of multiple globular Drusen and **(g)** filiform deposits of amyloid attached to cortical capillaries whose walls also stain for amyloid. **(h)** Higher magnification shows continuity of the filaments with amyloid in the capillary wall. Scale bars = 20 μ m (a-d,f-h) and 10 μ m (e). Reprinted with permission from John Wiley & Sons, Inc. [28].

Pathogenesis of cerebral amyloid angiopathy

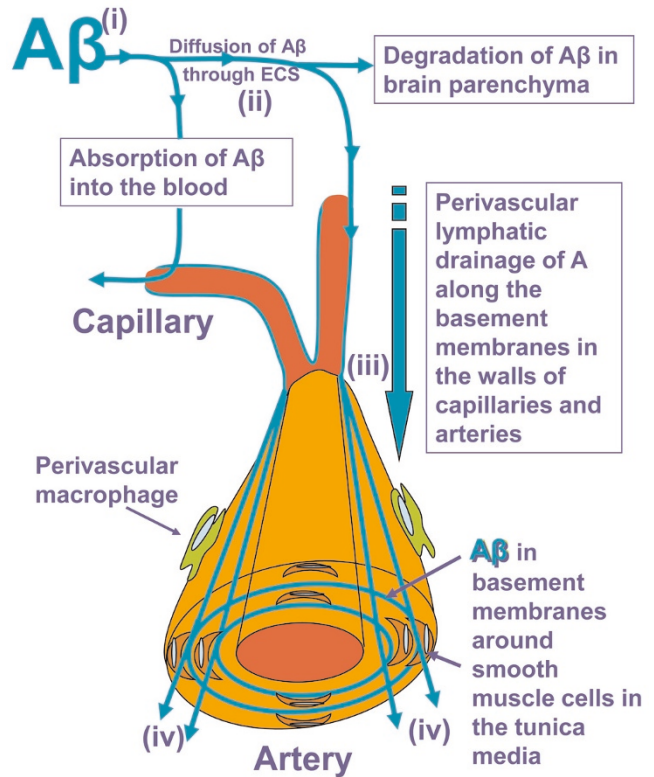
Early theories for the pathogenesis of CAA suggested that the A β in vessel walls was derived from the blood [18,19] or from vascular smooth muscle cells [24]. However, transgenic mouse lines that overexpress human A β only in neurons in the brain develop CAA [34], suggesting that A β is probably not derived from the blood in CAA but from the brain [5]. Furthermore, A β is deposited not only in the walls of arteries in CAA but also in the walls of capillaries that lack smooth muscle [34,35]. Although smooth muscle cells in artery walls produce A β (in common with most cells in the body) and may contribute to CAA, they do not appear to be the main source of A β in CAA [5,36]. In BRI2-related dementia [13], ABri amyloid is not produced by vascular smooth muscle cells, yet CAA is a very prominent pathological feature; this again suggests that amyloid in CAA is derived from the central nervous system. Most of the evidence now points to the failure of perivascular lymphatic drainage of A β as a major factor in the pathogenesis of CAA in AD [5,23].

Failure of perivascular lymphatic drainage of amyloid-beta from the brain

Perivascular lymphatic drainage pathways by which ISF and solutes drain from the brain have been defined in experimental animals [3,9,37], and A β is deposited in those pathways in CAA as its drainage fails with age (Figure 4). Fluorescent tracers injected into the striatum of the mouse brain initially spread diffusely through the brain parenchyma, but within 5 minutes, the tracers are located in the capillary basement membranes and in the basement membranes around smooth muscle cells in the tunica media of arteries [3]. Tracers are taken up in small amounts by vascular smooth muscle cells and by perivascular macrophages along the lymphatic drainage route [3]. Lymphatic drainage of ISF along artery walls appears to be almost completely separate from CSF [7]. Only 15% of radioactive tracer injected into the ISF is recoverable from the CSF, and the majority of tracer drains to the cervical lymph nodes [9] at a rate equivalent to lymphatic drainage from other tissues [9]. Radioactive tracers injected into the brain were located in the adventitia of intracranial arteries but were absent from the walls of the carotid artery in the neck [9]. This suggests that solutes draining from the brain pass along the walls of intracranial arteries but leave the carotid artery wall at the base of the skull en route to the cervical lymph nodes [7,9].

Figure 4 summarises the major mechanisms and routes for the elimination of A β from the brain. Observations from tracer studies and from CAA (Figures 1-3) suggest that, as A β leaves the brain, it initially diffuses with ISF and other solutes through the narrow and tortuous extracellular spaces of the grey matter [3,33,38] (Figure 4). It then enters the bulk drainage pathways in the 100- to 150-nm-thick endothelial basement membranes in the walls of capillaries [3,28,33] to drain out of the brain along basement membranes in the tunica media of cortical and leptomeningeal arteries [5].

Figure 4



Elimination of amyloid-beta (A β) from the brain. A β is (i) produced by neurons and other cells in the brain and then (ii) diffuses with interstitial fluid and other solutes through the narrow extracellular spaces (ECS) of the brain to (iii) the bulk flow lymphatic drainage pathways in the basement membranes of capillaries and in the tunica media of artery walls and (iv) out of the brain to cervical lymph nodes. Smooth muscle cells and perivascular macrophages take up A β and are part of the elimination pathway. Degradation of A β occurs in the brain parenchyma, by neprilysin and other enzymes, and A β is absorbed into the blood by LRP-1 (lipoprotein receptor-related protein-1)-mediated mechanisms in capillary endothelia. These mechanisms for the elimination of A β from the brain tend to fail with age and in Alzheimer disease.

Basement membranes of the arterial endothelium are not involved in the drainage of fluorescent tracers and do not contain stainable A β in CAA [3,5] (Figure 4). This may be one reason why CAA in older patients and in those with AD is not accompanied by catastrophic arterial thrombosis. Although capillaries may be occluded and reduced in number in AD [39], thrombotic occlusion of arteries in AD is not as widespread as CAA.

Tracer studies suggest that fluid and solutes move to the adventitia of leptomeningeal arteries and from there to the lymph nodes at the base of the skull [7,9]. In CAA, A β is detected by immunohistochemistry mainly in the tunica media of smaller leptomeningeal arteries but is present in the adventitia on the outer aspects of medium-sized leptomeningeal

geal arteries [23], suggesting that A β follows the same lymphatic drainage route as tracers in experimental animals [7,9]. Restriction of A β to the walls of intracranial arteries and its absence from the walls of the extracranial carotid artery [25] suggest that A β drains from the wall of the carotid artery to lymph nodes related to the artery at the base of the skull [40]. The pattern of deposition of A β in the basement membranes of capillary and artery walls in CAA indicates that there is a failure of lymphatic drainage of A β and suggests that the failure is related to age changes in artery walls.

Age changes in cerebral arteries and the aetiology of cerebral amyloid angiopathy

As arteries age, fibrous tissue increases in the tunica intima and tunica media (arteriosclerosis and arteriolosclerosis) and arteries become stiffer [23]. Such age changes may interfere with the motive force for transport of ISF and solutes, like soluble A β , out of the brain. Theoretical models suggest that the contrary (reflection) wave that follows the pulse wave in arteries is the motive force that drives ISF and solutes out of the brain along perivascular pathways in the direction opposite to the flow of blood in the lumen [8]. Stretching of the basement membrane with expansion of the artery during systole may be the valve that prevents reflux during the subsequent pulse wave [23]. If the pulse wave is the motive force for perivascular drainage of A β , then stiffening of artery walls with age may interfere with that force.

Vascular basement membrane changes that occur with age and defects in innervation of cerebral vessel may also play roles in the pathogenesis of CAA [8,23]. Overproduction of transforming growth factor-beta-1 in transgenic mice results in changes in vascular basement membranes and induces CAA [41]. Furthermore, experimental cholinergic deafferentation of arteries within the brain, induced by the destruction of the nucleus basalis, results in CAA that resolves with re-innervation [42]. These observations emphasise the need to view the lymphatic drainage pathways as a dynamic entity in the context of the whole neurovascular unit [43].

Pathogenesis of cerebral amyloid angiopathy in capillaries

Capillary CAA is much less common than CAA in leptomeningeal or cortical arteries and has been associated with severe dementia [44] and with *APOE* ϵ 4 genotype [31]. However, this does not explain the pathogenesis of capillary CAA. An association between capillary CAA and thrombotic occlusion of cortical arteries has been reported [32], and there is an increase in capillary CAA in the brains of patients treated with immunotherapy [45]. In both of these instances, capillary CAA is associated with a paucity or absence of A β plaques in the surrounding brain parenchyma and the deposition of A β in capillary walls. In the immunised patients with AD, there is an increase in A β 42 in the walls of blood vessels, suggesting that it is derived from plaque A β [46]. It seems that the removal of A β from plaques by microglia,

activated by either ischaemia or immunisation, results in an overload of the drainage pathways in capillary walls by which A β drains from the brain.

Failure of other mechanisms for elimination of amyloid-beta aggravates cerebral amyloid angiopathy

Arranged along the pathway for the drainage of soluble A β from the brain is an array of enzymes and mechanisms for the elimination of A β (Figure 4) [1]. Enzymes that degrade A β are present in the brain parenchyma and in artery walls [1]. Mechanisms that mediate absorption of A β into the blood via capillary endothelium or uptake of A β by smooth muscle cells are also present in the walls of cerebral blood vessels [1].

Neprilysin, angiotensin-converting enzyme and insulin-degrading enzyme are among the A β -degrading enzymes to which A β is exposed as it diffuses through the extracellular spaces of grey matter in the brain and along the perivascular drainage pathways [1]. Neprilysin can hydrolyse monomeric and oligomeric forms of A β 40 and A β 42. However, abnormal forms of A β that result from the Flemish, Dutch, Italian and Arctic mutations in the APP gene are not cleaved by neprilysin and these familial disorders are associated with severe CAA and early-onset cerebral haemorrhage or dementia [10]. Neprilysin is produced by pyramidal neurons and by smooth muscle cells in the walls of arteries [47]; a reduction of neprilysin in artery walls is associated with severe CAA in AD and in transgenic mice [47,48]. Other enzymes that degrade A β in the walls of cerebral arteries are also deficient or less active in AD [1].

Absorption of A β into the blood, mediated by low-density lipoprotein receptor-related protein-1 (LRP-1) located in capillary endothelium [43,49], is a major mechanism for elimination of A β from the brain [43] and is six times faster than lymphatic drainage [50]. LRP-1 also mediates the entry of A β into vascular smooth muscle cells, where it is degraded [43]. Failure of LRP-1-related elimination of A β with age [49] or in conditions of hypoxia [43] may also increase the flow of soluble A β into perivascular drainage pathways already compromised by age changes in the artery walls themselves [23].

There is evidence that the perivascular macrophages that take up tracer draining along perivascular pathways [3] also degrade A β [51]. In APP transgenic mice that overproduce human A β , stimulation of perivascular macrophages reduces the severity of CAA whereas depletion of these cells increases the severity of CAA [51]. Enzymic and absorptive mechanisms appear to fail with age [1]. Such a failure may be a factor that aggravates CAA in older patients and in those with AD by diverting more A β into the ageing perivascular drainage pathways [23].

Complications of cerebral amyloid angiopathy

The major complications associated with CAA are (a) rupture of amyloid-laden arteries, resulting in acute and often fatal

intracerebral haemorrhage; (b) A β -related angiitis; (c) disruption of lymphatic drainage of ISF and solutes along artery walls; and (d) cerebral hypoperfusion. The last two complications apply particularly to AD. Intracerebral haemorrhage is a feature of familial and sporadic CAA [52]. Familial cases of A β -CAA typically present with recurrent cerebral haemorrhages, white matter lesions and cognitive impairment 20 years earlier than patients with sporadic CAA [52]. Mutant A β in some forms of familial CAA is resistant to degradation by neprilysin and thus may increase the amount of A β draining along perivascular pathways [52]. In sporadic CAA-related haemorrhage, the temporal and occipital lobes are preferentially affected [53], and although the major risk factor for the development of CAA is the APOE ϵ 4 allele, the ϵ 2 allele predisposes to haemorrhage [29]. Artery walls often show severe degenerative changes in addition to severe CAA [29].

A β -related angiitis is a complication of CAA [52,54]. Patients present at a mean age of 67 years with changes in mental status, headaches, seizures, focal neurological signs or hallucinations [54]. The angiopathy may be granulomatous with accumulation of lymphocytes around leptomeningeal arteries and the presence of multinucleated giant cells in vessel walls related to deposits of A β . There is microglial activation in the cortex and white matter hyperintensities on magnetic resonance imaging [54]. The presence of angiitis in relation to CAA may have implications for immunotherapy in AD [52,54].

Cerebral amyloid angiopathy in the aetiology of Alzheimer disease

CAA affects two of the major functions of cerebral arteries in AD: (a) the blood supply to the brain and (b) the lymphatic drainage of ISF and solutes from the brain. Accumulation of A β and the loss of smooth muscle cells in CAA result in decreased vascular reactivity to functional stimulation and affect the blood supply to the brain in AD [16,43,55]. Pathologically, CAA initially affects the leptomeningeal and parenchymal arteries of the cerebral cortex whereas severe arteriosclerosis tends to affect the vessels in the basal ganglia in the initial stages, and both are associated with defects in blood flow and cognitive decline in AD [20].

Accumulation of amyloid-beta in the brain in Alzheimer disease

Figure 5 summarises the role of impaired lymphatic drainage of the brain and CAA in the accumulation of A β in the brain in AD. Diffusion of A β through the extracellular spaces of the brain and along the drainage pathways in artery walls [56,57] is impaired by plaques of A β in the brain [58,59]. CAA also restricts the drainage of A β along perivascular pathways as seen in tg2576 transgenic mice in which plasma levels of A β fall and levels of A β in the brain rise as CAA develops [60].

There is evidence that the failure of elimination of A β and fluid from the brain correlates with CAA in human AD. First, severe CAA correlates with severe dementia [61]. Second, high

levels of soluble A β 40 in brain parenchyma, with up to a threefold increase, distinguish demented patients with AD from non-demented patients, even though the non-demented patients may have high numbers of insoluble A β plaques in their brains [62]. Third, accumulation of fluid in cerebral white matter (leukoaraiosis) in AD has been correlated with the severity of CAA [27], suggesting that A β in artery walls may block the perivascular drainage of fluid and solutes from white matter as well as from grey matter.

These observations suggest that one of the main pathogenic roles of insoluble A β is to block the elimination of fluid and solutes from the brain. This may result in the accumulation of toxic soluble fibrillar oligomers of A β in the brain in AD [63]. But it may equally well result in the accumulation of other soluble metabolites and the loss of homeostasis of the neuronal environment with consequent impairment of neuronal function.

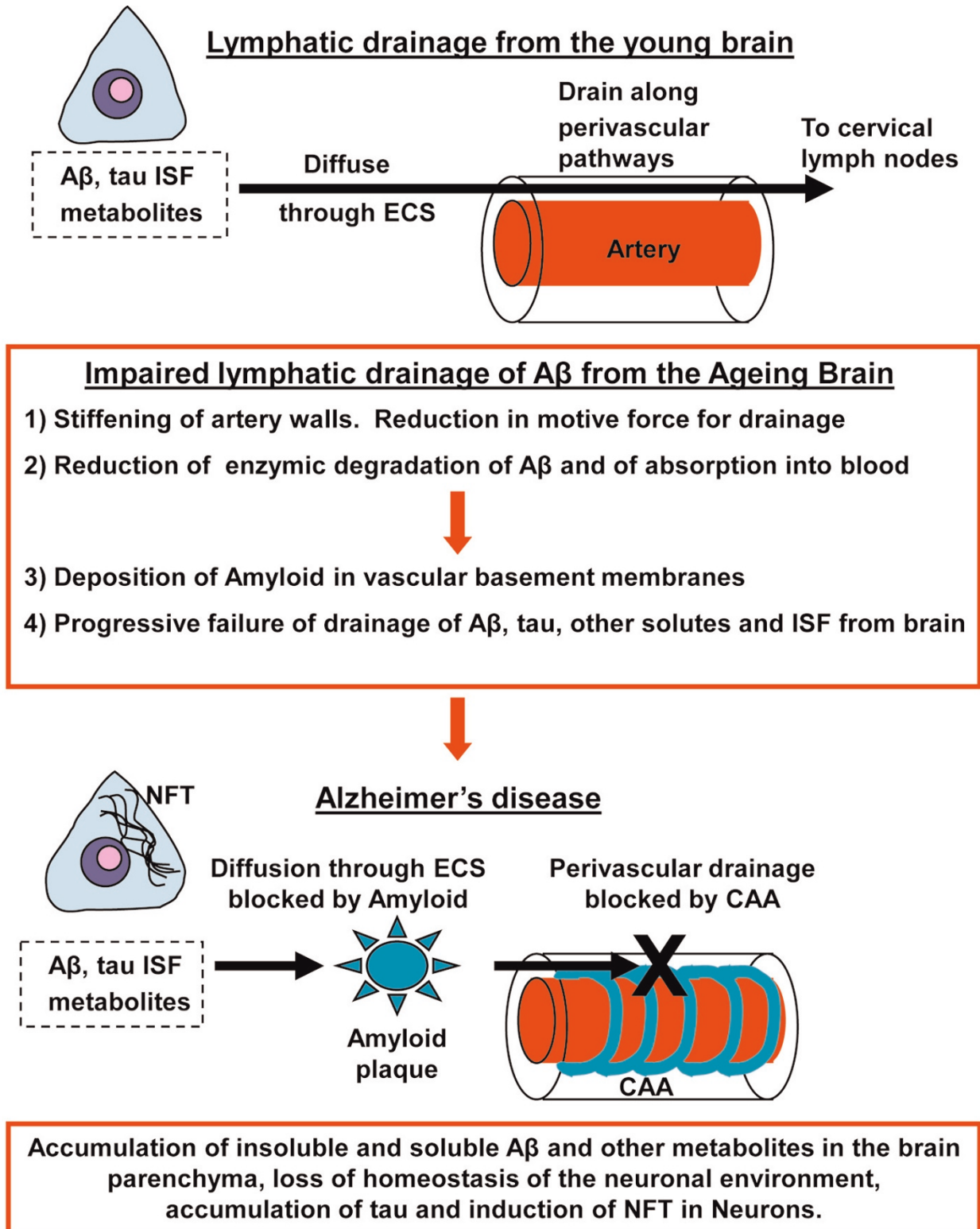
Variability of cerebral amyloid angiopathy in Alzheimer disease

The reported prevalence of CAA in histological studies of brains of patients with AD varies from 90% to 96% [1]. However, the true prevalence of CAA in AD may be significantly underestimated in histological and immunohistochemical surveys in which little account may be taken of the long length of the perivascular drainage pathways, the patchy nature of A β deposits and the relative insensitivity of immunohistochemistry as a method for detecting A β compared with biochemical techniques [23]. Methods using isolated cerebral arteries, stained for amyloid, may give better estimates of the true prevalence and distribution of CAA in AD [4,27], and a greater understanding of the dynamics and pathophysiology of perivascular drainage should help to resolve any current discrepancies in the role of CAA in the aetiology of AD.

Role of cerebral amyloid angiopathy in the accumulation of tau in the brain in Alzheimer disease

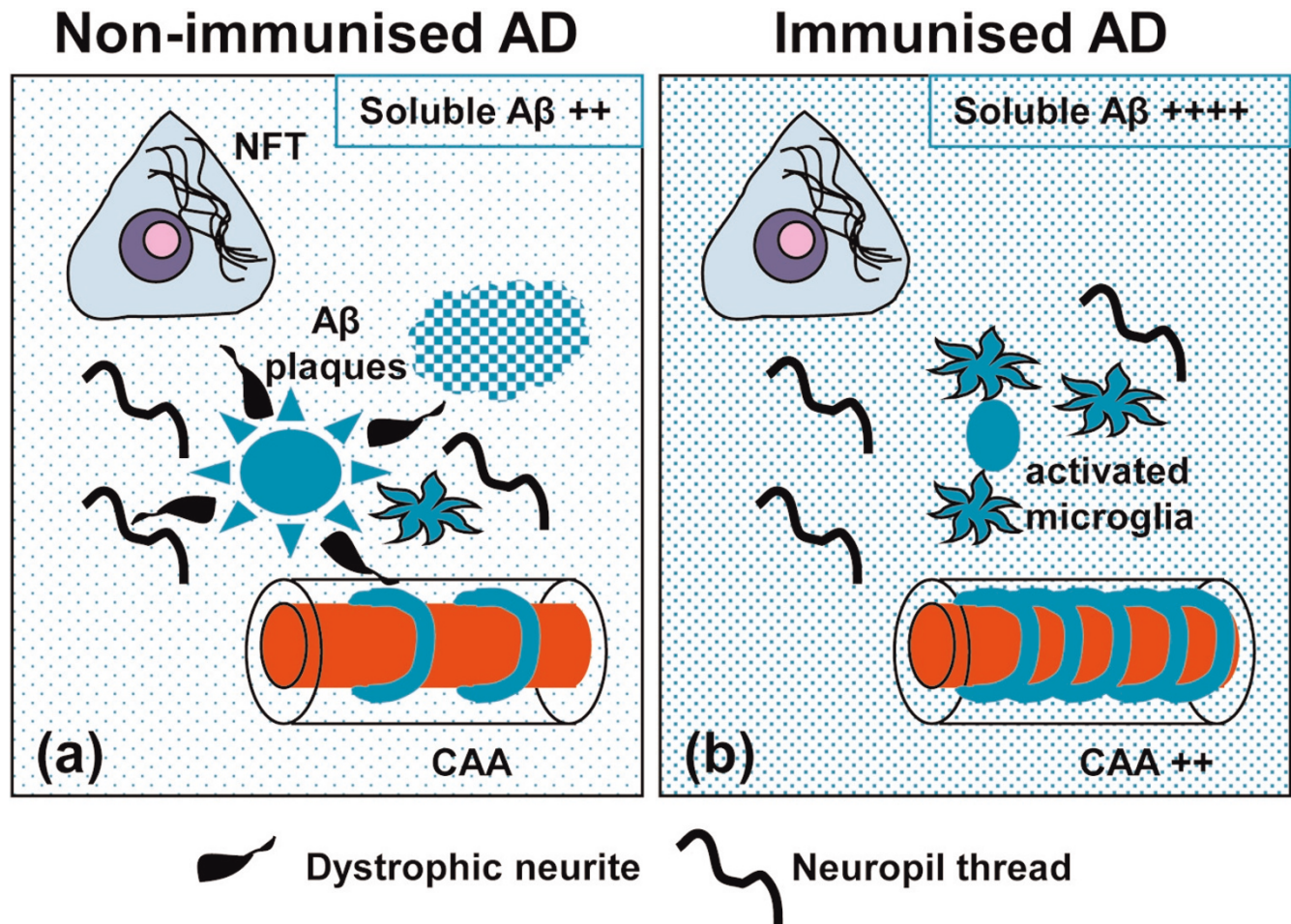
In addition to the accumulation of insoluble and soluble A β s in the brain in AD, hyperphosphorylated tau accumulates as neurofibrillary tangle (NFT) in neurons and as neuropil threads and dystrophic neurites in neuronal processes [64]. Explaining how the accumulation of tau relates to the deposition of A β in the brain has presented a challenge for many years. In transgenic mice that overexpress both APP and tau, the deposition of A β in the brain precedes and accelerates the accumulation of intracellular tau [65]. Furthermore, a recent study suggests that failure of elimination of tau from the extracellular spaces of the brain may play a role in the intracellular accumulation of tau [66]. In AD, tau inclusions first appear in neurons in the transentorhinal cortex and then spread to the hippocampal formation and neocortex [64]. Cognitive impairment ensues as tau inclusions reach the hippocampus, and neocortical tau inclusions are a hallmark of the later and more severe stages of AD [64]. Injections of

Figure 5



Impaired lymphatic drainage of the brain in the pathogenesis of cerebral amyloid angiopathy (CAA) and Alzheimer disease (AD). The schema outlines a working hypothesis for the failure of perivascular lymphatic drainage of the brain with age and how such a failure contributes to the pathogenesis of CAA and AD. Aβ, amyloid-beta; ECS, extracellular spaces; ISF, interstitial fluid; NFT, neurofibrillary tangle.

Figure 6



Changes in the brain induced by amyloid-beta (Aβ) immunotherapy. Comparison of frames (a) and (b) shows the major effects of Aβ immunotherapy upon the brain. There is a *decrease* in plaques of Aβ and of dystrophic neurites but an *increase* in the severity of cerebral amyloid angiopathy (CAA), in microglial activation (for the degradation of Aβ plaques), and in the level of soluble Aβ in the brain parenchyma. Neurofibrillary tangles (NFTs) and neuropil threads are still present. AD, Alzheimer disease.

fibrillary tau transfer the propensity to form NFT in mice [66], which suggests that interference with the disposal of tau from the extracellular spaces when lymphatic drainage pathways are blocked by CAA may be a factor in the formation and spread of NFT in the human brain in AD.

Increase of cerebral amyloid angiopathy following immunotherapy for Alzheimer disease

Immunisation against Aβ42 prevents the accumulation of plaques of Aβ in the brains of young transgenic APP mice and removes insoluble plaques of Aβ from the brains of older mice [67]. Similar results with the clearance of Aβ have been observed in the Elan clinical trial of Aβ immunisation in patients with AD [68]. However, despite the removal of Aβ plaques from the brain, there is little evidence that this benefits cognitive function [69].

Figure 6 is a summary of the effects of Aβ42 immunisation on the brain in AD. In non-immunised patients with AD (Figure 6a), insoluble Aβ is present in the brain parenchyma as diffuse plaques and as compact neuritic plaques surrounded by dystrophic neurites containing hyperphosphorylated tau. Neuropil threads and neurons containing NFT are also present in the brains of unimmunised patients. Following immunisation with Aβ42 (Figure 6b), insoluble Aβ in the plaques is removed by antibodies and activated microglia and the dystrophic neurites associated with neuritic plaques disappear [46]. NFTs in neurons and neuropil threads remain [46]. However, the severity of CAA increases following immunotherapy (Figure 6b) [46,70], and there is some indication that the level of soluble Aβ rises in the brains of treated patients [71].

There is an increase in Aβ42 in capillary and artery walls following immunisation in AD [45,46]. Aβ40 is usually the

predominant amyloid in vessel walls and A β 42 is mainly in the plaques [23]. Increased amounts of A β 42 in vessel walls appear to be the result of removal of the A β plaques [45,46], allowing more A β 42 to reach drainage channels in capillary and artery walls, where its further removal is blocked and the severity of CAA increases [46].

Changes in the white matter of patients treated with immunotherapy have raised concerns [68,72]. The increased signal seen in the white matter on T2-weighted magnetic resonance imaging in many older individuals and in those with AD [73] and often ascribed to ischaemia is aggravated by immunotherapy [68]. Failure of fluid drainage from the white matter along arteries that are severely affected by CAA [27] may be a factor in the increased white matter changes following immunisation.

Solving the problem of CAA is obviously a priority for ensuring the success of immunotherapy for AD and there is some indication that this may be possible. Although A β immunotherapy in APP mice usually results in an increase in CAA [70], passive immunisation with antibodies that bind to the N-terminal portion of A β results in a reduction of CAA [74]. Furthermore, two human cases who survived for 5 years following immunisation showed extensive clearance of A β from plaques and very little CAA [46]. It is possible that, with time, CAA will resolve in some immunised patients. The role of apoE in the elimination of A β from the brain is still not fully established, but the marked accumulation of apoE co-localising with A β in CAA following immunisation suggests that the elimination of A β may be chaperoned by apoE [45].

Conclusions and future directions

Elimination of A β from the brain involves enzymic degradation, its absorption into the blood and drainage of A β along perivascular lymphatic drainage pathways. All of these mechanisms appear to fail as the brain and cerebral arteries age. One of the major consequences of this failure is the obstruction of lymphatic drainage of fluid and solutes from the brain by CAA that results in the accumulation of insoluble and soluble A β s in the brain and probably other metabolites that would lead to loss of homeostasis of the neuronal environment. Accumulation of hyperphosphorylated tau in neurons and failure of neuronal function may ensue from the loss of homeostasis.

The therapeutic challenge is to ensure adequate elimination of A β from the ageing brain and along ageing cerebral arteries. Pharmacological intervention to enhance enzymic degradation of A β and absorption of A β into the blood is one obvious direction to take. Resolving the inadequacies of the ageing lymphatic drainage pathway will entail a greater understanding of its physiology and how the various elements such as basement membranes, smooth muscle cells and perivascular cells interact and how they change with age. Establishing the role played by apoE in the elimination of A β

and harnessing this information for the design of therapies may help to prevent the accumulation of amyloid in blood vessel walls and brain in AD.

Competing interests

The authors declare that they have no competing interests.

Acknowledgements

We thank Anton Page of the Biomedical Imaging Unit, Southampton General Hospital, for his help with the illustrations and Delphin Boche (Clinical Neurosciences, Southampton) for her advice on the manuscript. This work was supported by the Alzheimer's Research Trust (UK).

References

1. Love S, Miners S, Palmer J, Chalmers K, Kehoe P: **Insights into the pathogenesis and pathogenicity of cerebral amyloid angiopathy.** *Front Biosci* 2009, **14**:4778-4792.
2. Esiri MM, Wilcock GK: **Cerebral amyloid angiopathy in dementia and old age.** *J Neurol Neurosurg Psychiatr* 1986, **49**:1221-1226.
3. Carare RO, Bernardes-Silva M, Newman TA, Page AM, Nicoll JAR, Perry VH, Weller RO: **Solutes, but not cells, drain from the brain parenchyma along basement membranes of capillaries and arteries. Significance for cerebral amyloid angiopathy and neuroimmunology.** *Neuropathol Appl Neurobiol* 2008, **34**:131-144.
4. Weller RO, Massey A, Newman TA, Hutchings M, Kuo YM, Roher AE: **Cerebral amyloid angiopathy: amyloid beta accumulates in putative interstitial fluid drainage pathways in Alzheimer's disease.** *Am J Pathol* 1998, **153**:725-733.
5. Weller RO, Subash M, Preston SD, Mazanti I, Carare RO: **Perivascular drainage of amyloid-beta peptides from the brain and its failure in cerebral amyloid angiopathy and Alzheimer's disease.** *Brain Pathol* 2008, **18**:253-266.
6. Muthuchamy M, Zawieja D: **Molecular regulation of lymphatic contractility.** *Ann N Y Acad Sci* 2008, **1131**:89-99.
7. Weller RO, Djuanda E, Yow HY, Carare RO: **Lymphatic drainage of the brain and the pathophysiology of neurological disease.** *Acta Neuropathol* 2009, **117**:1-14.
8. Schley D, Carare-Nnadi R, Please CP, Perry VH, Weller RO: **Mechanisms to explain the reverse perivascular transport of solutes out of the brain.** *J Theor Biol* 2006, **238**:962-974.
9. Szentistvanyi I, Patlak CS, Ellis RA, Cserr HF: **Drainage of interstitial fluid from different regions of rat brain.** *Am J Physiol* 1984, **246**:F835-844.
10. Revesz T, Holton JL, Lashley T, Plant G, Frangione B, Rostagno A, Ghiso J: **Genetics and molecular pathogenesis of sporadic and hereditary cerebral amyloid angiopathies.** *Acta Neuropathol* 2009, **118**:115-130.
11. Palsdottir A, Snorraddottir AO, Thorsteinsson L: **Hereditary cystatin C amyloid angiopathy: genetic, clinical, and pathological aspects.** *Brain Pathol* 2006, **16**:55-59.
12. Reilly MM, Staunton H: **Peripheral nerve amyloidosis.** *Brain Pathol* 1996, **6**:163-177.
13. Lashley T, Revesz T, Plant G, Bandopadhyay R, Lees AJ, Frangione B, Wood NW, de Silva R, Ghiso J, Rostagno A, Holton JL: **Expression of BRI2 mRNA and protein in normal human brain and familial British dementia: its relevance to the pathogenesis of disease.** *Neuropathol Appl Neurobiol* 2008, **34**:492-505.
14. Kovacs GG, Budka H: **Molecular pathology of human prion diseases.** *Int J Mol Sci* 2009, **10**:976-999.
15. Chesebro B, Trifilo M, Race R, Meade-White K, Teng C, LaCasse R, Raymond L, Favara C, Baron G, Priola S, Caughey B, Masliah E, Oldstone M: **Anchorless prion protein results in infectious amyloid disease without clinical scrapie.** *Science* 2005, **308**:1435-1439.
16. Smith EE, Greenberg SM: **Beta-amyloid, blood vessels, and brain function.** *Stroke* 2009, **40**:2601-2606.
17. Weller RO, Galea I, Carare RO, Minagar A: **Pathophysiology of the lymphatic drainage of the central nervous system: implications for pathogenesis and therapy of multiple sclerosis.** *Pathophysiology*, in press.

18. Scholz W: **Studies on the pathology of cerebral blood vessels II. The nodular degeneration of cerebral arteries and capillaries. (A form of senile vascular disease) [in German].** *Zeitschrift für die gesamte Neurologie und Psychiatrie* 1938, **162**:694-715.
19. Glenner GG, Wong CW, Quaranta V, Eanes ED: **The amyloid deposits in Alzheimer's disease: their nature and pathogenesis.** *Appl Pathol* 1984, **2**:357-369.
20. Thal DR, Ghebremedhin E, Orantes M, Wiestler OD: **Vascular pathology in Alzheimer disease: correlation of cerebral amyloid angiopathy and arteriosclerosis/lipohyalinosis with cognitive decline.** *J Neuropathol Exp Neurol* 2003, **62**:1287-1301.
21. Thal DR, Rüb U, Orantes M, Braak H: **Phases of A beta-deposition in the human brain and its relevance for the development of AD.** *Neurology* 2002, **58**:1791-1800.
22. Thal DR, Griffin WS, de Vos RA, Ghebremedhin E: **Cerebral amyloid angiopathy and its relationship to Alzheimer's disease.** *Acta Neuropathol* 2008, **115**:599-609.
23. Weller RO, Boche D, Nicoll JA: **Microvasculature changes and cerebral amyloid angiopathy in Alzheimer's disease and their potential impact on therapy.** *Acta Neuropathol* 2009, **118**:87-102.
24. Wisniewski HM, Wegiel J: **Beta-amyloid formation by myocytes of leptomeningeal vessels.** *Acta Neuropathol (Berl)* 1994, **87**:233-241.
25. Shinkai Y, Yoshimura M, Ito Y, Odaka A, Suzuki N, Yanagisawa K, Ihara Y: **Amyloid beta-proteins 1-40 and 1-42(43) in the soluble fraction of extra- and intracranial blood vessels.** *Ann Neurol* 1995, **38**:421-428.
26. Domnitz SB, Robbins EM, Hoang AW, Garcia-Alloza M, Hyman BT, Rebeck GW, Greenberg SM, Bacskai BJ, Frosch MP: **Progression of cerebral amyloid angiopathy in transgenic mouse models of Alzheimer disease.** *J Neuropathol Exp Neurol* 2005, **64**:588-594.
27. Roher AE, Kuo Y-M, Esh C, Knebel C, Weiss N, Kalback W, Luehrs DC, Childress JL, Beach TG, Weller RO, Kokjohn TA: **Cortical and leptomeningeal cerebrovascular amyloid and white matter pathology in Alzheimer's disease.** *Mol Med* 2003, **9**:112-122.
28. Preston SD, Steart PV, Wilkinson A, Nicoll JAR, Weller RO: **Capillary and arterial amyloid angiopathy in Alzheimer's disease: defining the perivascular route for the elimination of amyloid beta from the human brain.** *Neuropathol Appl Neurobiol* 2003, **29**:106-117.
29. McCarron MO, Nicoll JA, Stewart J, Ironside JW, Mann DM, Love S, Graham DI, Dewar D: **The apolipoprotein E epsilon2 allele and the pathological features in cerebral amyloid angiopathy-related hemorrhage.** *J Neuropathol Exp Neurol* 1999, **58**:711-718.
30. Oshima K, Akiyama H, Tsuchiya K, Kondo H, Haga C, Shimomura Y, Iseki E, Uchikado H, Kato M, Niizato K, Arai H: **Relative paucity of tau accumulation in the small areas with abundant Abeta42-positive capillary amyloid angiopathy within a given cortical region in the brain of patients with Alzheimer pathology.** *Acta Neuropathol (Berl)* 2006, **111**:510-518.
31. Thal DR, Ghebremedhin E, Rub U, Yamaguchi H, Tredici KD, Braak H: **Two types of sporadic cerebral amyloid angiopathy.** *J Neuropathol Exp Neurol* 2002, **61**:282-293.
32. Yow HY, Weller RO: **A role for cerebrovascular disease in determining the pattern of beta amyloid deposition in Alzheimer's disease.** *Neuropathol Appl Neurobiol* 2002, **28**:149.
33. Abbott NJ: **Evidence for bulk flow of brain interstitial fluid: significance for physiology and pathology.** *Neurochem Int* 2004, **45**:545-552.
34. Calhoun ME, Burgermeister P, Phinney AL, Stalder M, Tolnay M, Wiederhold KH, Abramowski D, Sturchler Pierrat C, Sommer B, Staufenbiel M, Jucker M: **Neuronal overexpression of mutant amyloid precursor protein results in prominent deposition of cerebrovascular amyloid.** *Proc Natl Acad Sci U S A* 1999, **96**:14088-14093.
35. Herzig MC, Van Nostrand WE, Jucker M: **Mechanism of cerebral beta-amyloid angiopathy: murine and cellular models.** *Brain Pathol* 2006, **16**:40-54.
36. Nicoll JAR, Yamada M, Frackowiak J, Mazur Kolecka B, Weller RO: **Cerebral amyloid angiopathy plays a direct role in the pathogenesis of Alzheimer's disease. Pro-CAA position statement.** *Neurobiol Aging* 2004, **25**:589-597; discussion 603-604.
37. Cserr HF, Harling-Berg CJ, Knopf PM: **Drainage of brain extracellular fluid into blood and deep cervical lymph and its immunological significance.** *Brain Pathol* 1992, **2**:269-276.
38. Syková E, Nicholson C: **Diffusion in brain extracellular space.** *Physiol Rev* 2008, **88**:1277-1340.
39. Thal DR, Capetillo-Zarate E, Larionov S, Staufenbiel M, Zurbuegg S, Beckmann N: **Capillary cerebral amyloid angiopathy is associated with vessel occlusion and cerebral blood flow disturbances.** *Neurobiol Aging* 2008, Mar 20. [Epub ahead of print].
40. Clapham R, O'Sullivan E, Weller RO, Carare RO: **Cervical lymph nodes are found in direct relationship with the carotid arteries. Significance for the lymphatic drainage of the brain.** *Clin Anat*, in press.
41. Wyss Coray T, Lin C, Sanan DA, Mucke L, Masliah E: **Chronic overproduction of transforming growth factor-beta1 by astrocytes promotes Alzheimer's disease-like microvascular degeneration in transgenic mice.** *Am J Pathol* 2000, **156**:139-150.
42. Beach TG: **Physiologic origins of age-related beta-amyloid deposition.** *Neurodegener Dis* 2008, **5**:143-145.
43. Bell RD, Zlokovic BV: **Neurovascular mechanisms and blood-brain barrier disorder in Alzheimer's disease.** *Acta Neuropathol* 2009, **118**:103-113.
44. Attems J, Jellinger K: **Only cerebral capillary amyloid angiopathy correlates with Alzheimer pathology - a pilot study.** *Acta Neuropathol (Berl)* 2004, **107**:83-90.
45. Nicoll JA, Barton E, Boche D, Neal JW, Ferrer I, Thompson P, Vlachouli C, Wilkinson D, Bayer A, Games D, Seubert P, Schenk D, Holmes C: **Abeta species removal after Abeta42 immunization.** *J Neuropathol Exp Neurol* 2006, **65**:1040-1048.
46. Boche D, Zotova E, Weller RO, Love S, Neal JW, Pickering RM, Wilkinson D, Holmes C, Nicoll JA: **Consequence of Abeta immunization on the vasculature of human Alzheimer's disease brain.** *Brain* 2008, **131**:3299-3310.
47. Miners JS, Van Helmond Z, Chalmers K, Wilcock G, Love S, Kehoe PG: **Decreased expression and activity of neprilysin in Alzheimer disease are associated with cerebral amyloid angiopathy.** *J Neuropathol Exp Neurol* 2006, **65**:1012-1021.
48. Farris W, Schütz SG, Cirrito JR, Shankar GM, Sun X, George A, Leissring MA, Walsh DM, Qiu WQ, Holtzman DM, Selkoe DJ: **Loss of neprilysin function promotes amyloid plaque formation and causes cerebral amyloid angiopathy.** *Am J Pathol* 2007, **171**:241-251.
49. Shibata M, Yamada S, Kumar SR, Calero M, Bading J, Frangione B, Holtzman DM, Miller CA, Strickland DK, Ghiso J, Zlokovic BV: **Clearance of Alzheimer's amyloid-beta(1-40) peptide from brain by LDL receptor-related protein-1 at the blood-brain barrier.** *J Clin Invest* 2000, **106**:1489-1499.
50. Bell RD, Sagare AP, Friedman AE, Bedi GS, Holtzman DM, Deane R, Zlokovic BV: **Transport pathways for clearance of human Alzheimer's amyloid beta-peptide and apolipoproteins E and J in the mouse central nervous system.** *J Cereb Blood Flow Metab* 2007, **27**:909-918.
51. Hawkes CA, McLaurin J: **Selective targeting of perivascular macrophages for clearance of beta-amyloid in cerebral amyloid angiopathy.** *Proc Natl Acad Sci U S A* 2009, **106**:1261-1266.
52. Zhang-Nunes SX, Maat-Schieman ML, van Duinen SG, Roos RA, Frosch MP, Greenberg SM: **The cerebral beta-amyloid angiopathies: hereditary and sporadic.** *Brain Pathol* 2006, **16**:30-39.
53. Rosand J, Muzikansky A, Kumar A, Wisco JJ, Smith EE, Betensky RA, Greenberg SM: **Spatial clustering of hemorrhages in probable cerebral amyloid angiopathy.** *Ann Neurol* 2005, **58**:459-462.
54. Scolding NJ, Joseph F, Kirby PA, Mazanti I, Gray F, Mikol J, Ellison D, Hilton DA, Williams TL, MacKenzie JM, Xuereb JH, Love S: **Abeta-related angiitis: primary angiitis of the central nervous system associated with cerebral amyloid angiopathy.** *Brain* 2005, **128**:500-515.
55. Smith EE, Vijayappa M, Lima F, Delgado P, Wendell L, Rosand J, Greenberg SM: **Impaired visual evoked flow velocity response in cerebral amyloid angiopathy.** *Neurology* 2008, **71**:1424-1430.
56. Meyer-Luehmann M, Coomaraswamy J, Bolmont T, Kaeser S, Schaefer C, Kilger E, Neuenschwander A, Abramowski D, Frey P,

- Jaton AL, Vigouret JM, Paganetti P, Walsh DM, Mathews PM, Ghiso J, Staufenbiel M, Walker LC, Jucker M: **Exogenous induction of cerebral beta-amyloidogenesis is governed by agent and host.** *Science* 2006, **313**:1781-1784.
57. Meyer-Luehmann M, Stalder M, Herzig MC, Kaeser SA, Kohler E, Pfeifer M, Boncristiano S, Matthews PM, Mercken M, Abramowski D, Staufenbiel M, Jucker M: **Extracellular amyloid formation and associated pathology in neural grafts.** *Nat Neurosci* 2003, **6**: 328-330.
 58. Mueggler T, Rausch M, Meyer-Luehmann M, Staufenbiel M, Jucker M, Rudin M: **Restricted diffusion in the brain of transgenic mice with cerebral amyloidosis.** *Eur J Neurosci* 2004, **20**:811-817.
 59. Sykova E, Vorisek I, Antonova T, Mazel T, Meyer-Luehmann M, Jucker M, Hajek M, Ort M, Bures J: **Changes in extracellular space size and geometry in APP23 transgenic mice: a model of Alzheimer's disease.** *Proc Natl Acad Sci U S A* 2005, **102**: 479-484.
 60. Kuo YM, Crawford F, Mullan M, Kokjohn TA, Emmerling MR, Weller RO, Roher AE: **Elevated A beta and apolipoprotein E in A betaPP transgenic mice and its relationship to amyloid accumulation in Alzheimer's disease.** *Mol Med* 2000, **6**:430-439.
 61. CFAS NGoM: **Pathological correlates of late-onset dementia in a multicentre, community-based population in England and Wales.** *Lancet* 2001, **357**:169-175.
 62. Lue LF, Kuo YM, Roher AE, Brachova L, Shen Y, Sue L, Beach T, Kurth JH, Rydel RE, Rogers J: **Soluble amyloid beta peptide concentration as a predictor of synaptic change in Alzheimer's disease.** *Am J Pathol* 1999, **155**:853-862.
 63. Tomic JL, Pensalfini A, Head E, Glabe CG: **Soluble fibrillar oligomer levels are elevated in Alzheimer's disease brain and correlate with cognitive dysfunction.** *Neurobiol Dis* 2009, **35**: 352-358.
 64. Braak H, Alafuzoff I, Arzberger T, Kretschmar H, Del Tredici K: **Staging of Alzheimer disease-associated neurofibrillary pathology using paraffin sections and immunocytochemistry.** *Acta Neuropathol* 2006, **112**:389-404.
 65. Oddo S, Caccamo A, Kitazawa M, Tseng BP, LaFerla FM: **Amyloid deposition precedes tangle formation in a triple transgenic model of Alzheimer's disease.** *Neurobiol Aging* 2003, **24**:1063-1070.
 66. Clavaguera F, Bolmont T, Crowther RA, Abramowski D, Frank S, Probst A, Fraser G, Stalder AK, Beibel M, Staufenbiel M, Jucker M, Goedert M, Tolnay M: **Transmission and spreading of tauopathy in transgenic mouse brain.** *Nat Cell Biol* 2009, **11**: 909-913.
 67. Schenk D, Barbour R, Dunn W, Gordon G, Grajeda H, Guido T, Hu K, Huang J, Johnson Wood K, Khan K, Kholodenko D, Lee M, Liao Z, Lieberburg I, Motter R, Mutter L, Soriano F, Shopp G, Vasquez N, Vandeventer C, Walker S, Wogulis M, Yednock T, Games D, Seubert P: **Immunization with amyloid-beta attenuates Alzheimer-disease-like pathology in the PDAPP mouse.** *Nature* 1999, **400**:173-177.
 68. Nicoll JA, Wilkinson D, Holmes C, Steart P, Markham H, Weller RO: **Neuropathology of human Alzheimer disease after immunization with amyloid-beta peptide: a case report.** *Nat Med* 2003, **9**:448-452.
 69. Holmes C, Boche D, Wilkinson D, Yadegarfar G, Hopkins V, Bayer A, Jones RW, Bullock R, Love S, Neal JW, Zotova E, Nicoll JA: **Long-term effects of Abeta42 immunisation in Alzheimer's disease: follow-up of a randomised, placebo-controlled phase I trial.** *Lancet* 2008, **372**:216-223.
 70. Wilcock DM, Rojiani A, Rosenthal A, Subbarao S, Freeman MJ, Gordon MN, Morgan D: **Passive immunotherapy against Abeta in aged APP-transgenic mice reverses cognitive deficits and depletes parenchymal amyloid deposits in spite of increased vascular amyloid and microhemorrhage.** *J Neuroinflammation* 2004, **1**:24.
 71. Patton RL, Kalback WM, Esh CL, Kokjohn TA, Van Vickle GD, Luehrs DC, Kuo YM, Lopez J, Brune D, Ferrer I, Masliah E, Newell AJ, Beach TG, Castaño EM, Roher AE: **Amyloid-beta peptide remnants in AN-1792-immunized Alzheimer's disease patients: a biochemical analysis.** *Am J Pathol* 2006, **169**:1048-1063.
 72. Orgogozo JM, Gilman S, Dartigues JF, Laurent B, Puel M, Kirby LC, Jouanny P, Dubois B, Eisner L, Flitman S, Michel BF, Boada M, Frank A, Hock C: **Subacute meningoencephalitis in a subset of patients with AD after Abeta42 immunization.** *Neurology* 2003, **61**:46-54.
 73. Pantoni L: **Leukoaraiosis: from an ancient term to an actual marker of poor prognosis.** *Stroke* 2008, **39**:1401-1403.
 74. Schroeter S, Khan K, Barbour R, Doan M, Chen M, Guido T, Gill D, Basi G, Schenk D, Seubert P, Games D: **Immunotherapy reduces vascular amyloid-beta in PDAPP mice.** *J Neurosci* 2008, **28**:6787-6793.