

CORRECTION

Correction: Predicting progression of Alzheimer's disease

Rachelle S Doody¹, Valory Pavlik^{1,2}, Paul Massman^{1,3}, Susan Rountree¹, Eveleen Darby¹ and Wenyaw Chan⁴

It has been brought to our attention that Figure 7 in our recently published paper [1] contains a labeling error. The

group marked "slow" should be labeled "fast" and the group marked "fast" should be labeled "slow". The corrected figure 7 is given here as Figure 1.

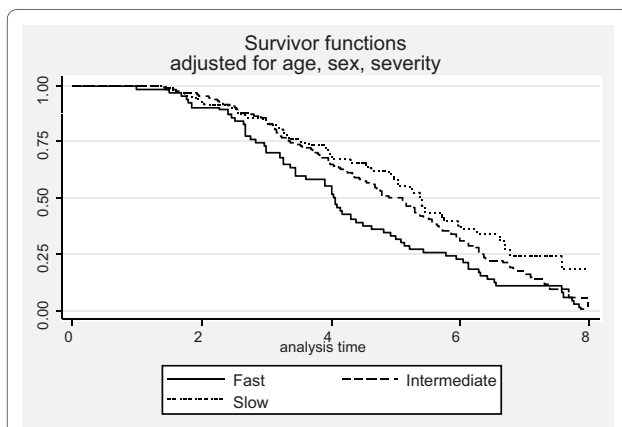


Figure 1. Kaplan-Meier Survival curves by pre-progression group adjusted for age and sex. HR for slow vs. fast = 0.62 ($P = 0.024$).

Author details

¹Alzheimer's Disease and Memory Disorders Center, Baylor College of Medicine, 6501 Fannin Street, NB302, Houston, TX 77030, USA. ²Division of Family Medicine, Baylor College of Medicine, 3701 Kirby Drive, Houston, TX 77098, USA. ³Department of Psychology, University of Houston, 126 Heyne Building, Houston, TX 77204-5022, USA. ⁴Department of Epidemiology and Biostatistics, University of Texas Health Sciences Center, 7703 Floyd Curl Drive, San Antonio, TX 78229-3900, USA.

Published: 18 May 2010

Reference

1. Doody RS, Pavlik V, Massman P, Rountree S, Darby E, Chan W. Predicting progression of Alzheimer's disease. *Alzheimer's Research & Therapy* 2010, 2:2.

doi:10.1186/alzrt38

Cite this article as: Doody RS, et al.: Correction: Predicting progression of Alzheimer's disease. *Alzheimer's Research & Therapy* 2010, 2:4.

*Correspondence: rdoody@bcm.tmc.edu

¹Alzheimer's Disease and Memory Disorders Center, Baylor College of Medicine, 6501 Fannin Street, NB302, Houston, TX 77030, USA

Full list of author information is available at the end of the article